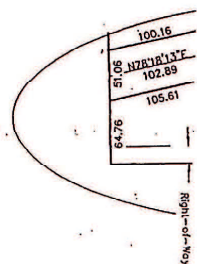


PRELIMINARY
 Kelly
 Cripple Creek



17 Lots

ABSTRACT OF TITLE

S U P P L E M E N T A L

TO THE FOLLOWING DESCRIBED REAL ESTATE SITUATED IN

SEQUOYAH COUNTY, STATE OF OKLAHOMA,

TO-WIT:

13-00570

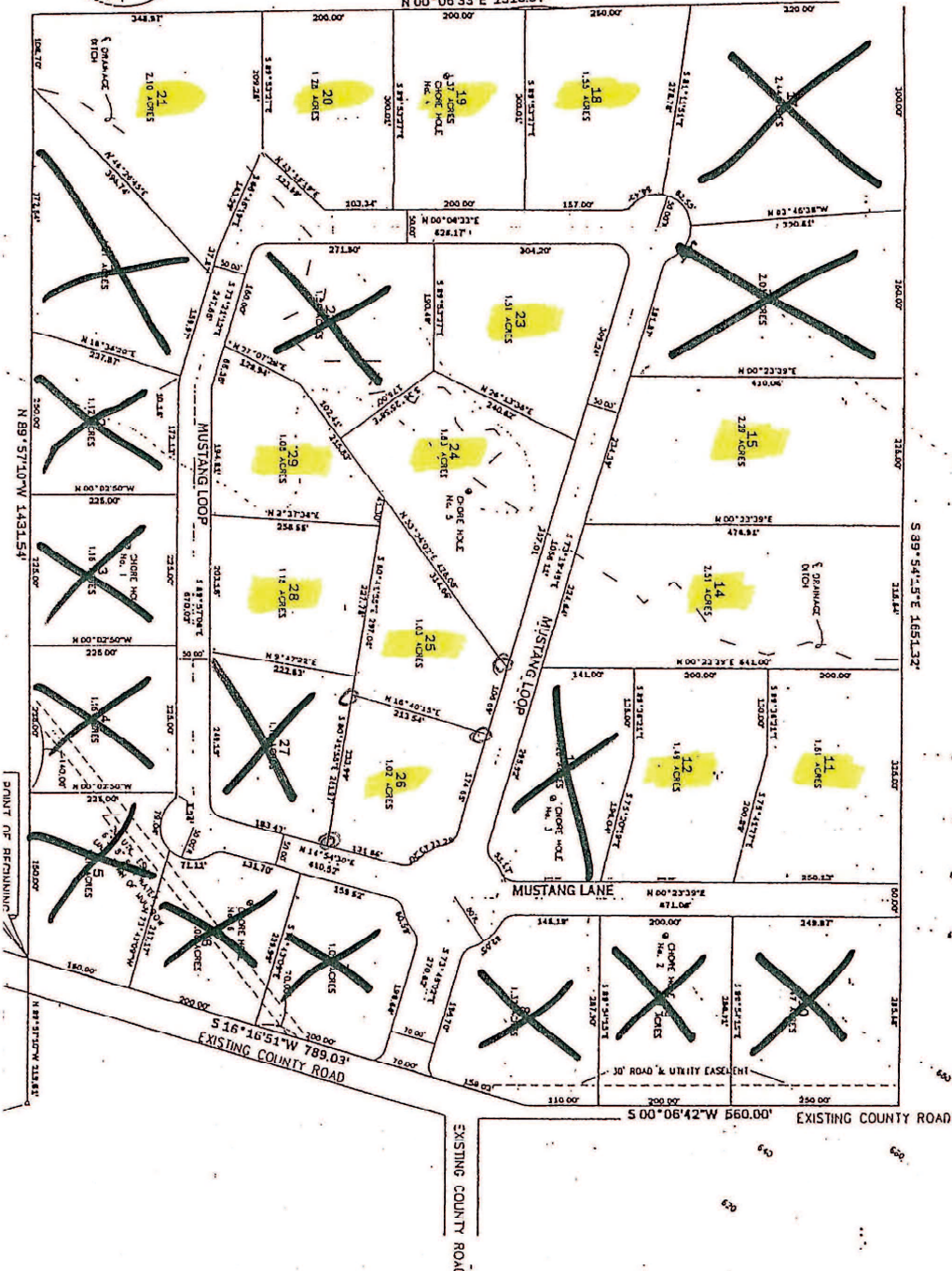
SURFACE ONLY

^{Sold}
LOTS 1, 2, 3, 4, 11, 12, 14, 15, 17, 18, 19, 20, 21, 23, 24, 25, 26, 28 AND 29
OF MUSTANG VALLEY ESTATES, BEING A PART OF THE E/2 NE/4
OF SECTION 17, TOWNSHIP 11 NORTH, RANGE 26 EAST,
SEQUOYAH COUNTY, OKLAHOMA.

SINCE: JUNE 26, 1998 AT 8:00AM

SCA TITLE, LLC

Sequoyah County's Newest Abstract & Title Services Company



colby

STATE OF OKLAHOMA
 COUNTY OF SCOTTSBURGH
 I, the undersigned, County Clerk, do hereby certify that the foregoing plat is a true and correct copy of the original plat on file in my office, and that the same has been duly recorded in my office, and that the same is a true and correct copy of the original plat on file in my office, and that the same is a true and correct copy of the original plat on file in my office, and that the same is a true and correct copy of the original plat on file in my office.

Bill [Signature]
 County Clerk

By Government License
[Signature]
 Notary Public

BEFORE ME, the undersigned authority, on this day personally appeared [Name], known to me to be the person whose name is subscribed to the foregoing plat, and acknowledged to me that he executed the same for the purposes and consideration therein expressed.

STATE OF OKLAHOMA
 COUNTY OF SCOTTSBURGH
 I, the undersigned, County Clerk, do hereby certify that the foregoing plat is a true and correct copy of the original plat on file in my office, and that the same has been duly recorded in my office, and that the same is a true and correct copy of the original plat on file in my office, and that the same is a true and correct copy of the original plat on file in my office, and that the same is a true and correct copy of the original plat on file in my office.